

A PART OF LOTS 5 & 8, PLAT 'B'. NORTH OGDEN SURVEY AND
PART OF THE W.1/2, OF SECTION 33, T.7N., R.1W., S.L.B. & M.

112

LEGACY NORTH 2 PHASE NO. 2

TAXING UNIT: 10

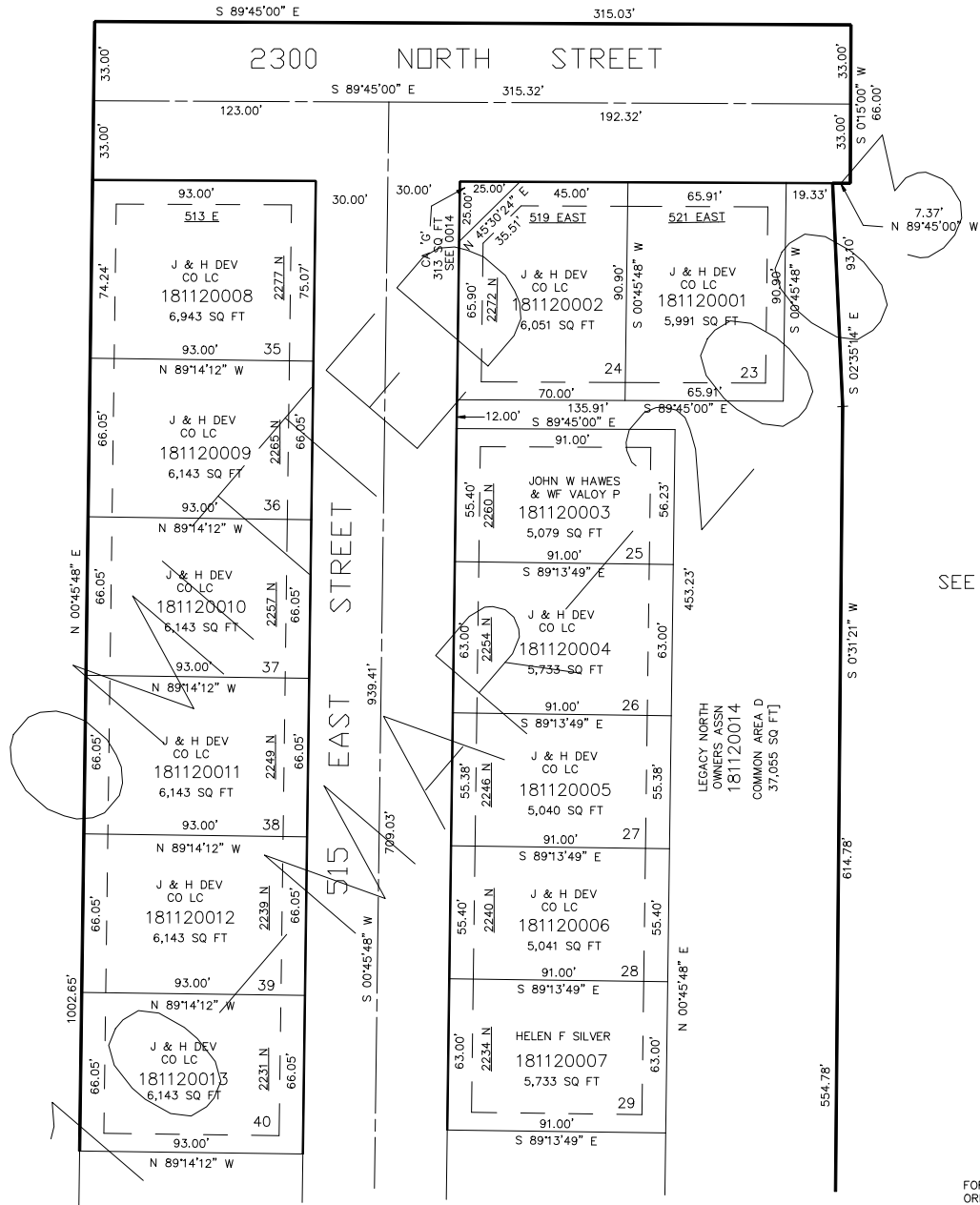
IN NORTH OGDEN CITY

SCALE 1" = 40'

SEE PAGE 45

SEE BOOK 17
P. 196 & 197

SEE PAGE 110 & 111



FOR COMPLETE ENG DATA SEE
ORIGINAL DEDICATION PLAT IN
BOOK54, PAGE 37 OF RECORDS.

UTILITY & DRAINAGE EASEMENTS 10' WIDE ON REAR,
FRONT & SIDE YARD FACING STREETS AND 7.5' WIDE ON
ALL OTHER SIDE YARDS AS DEPICTED BY DASHED LINES,
UNLESS OTHER WISE SHOWN. ALL COMMON AREAS ARE
DESIGNATED AS UTILITY AND DRAINAGE EASEMENTS.

SEE PAGE 113